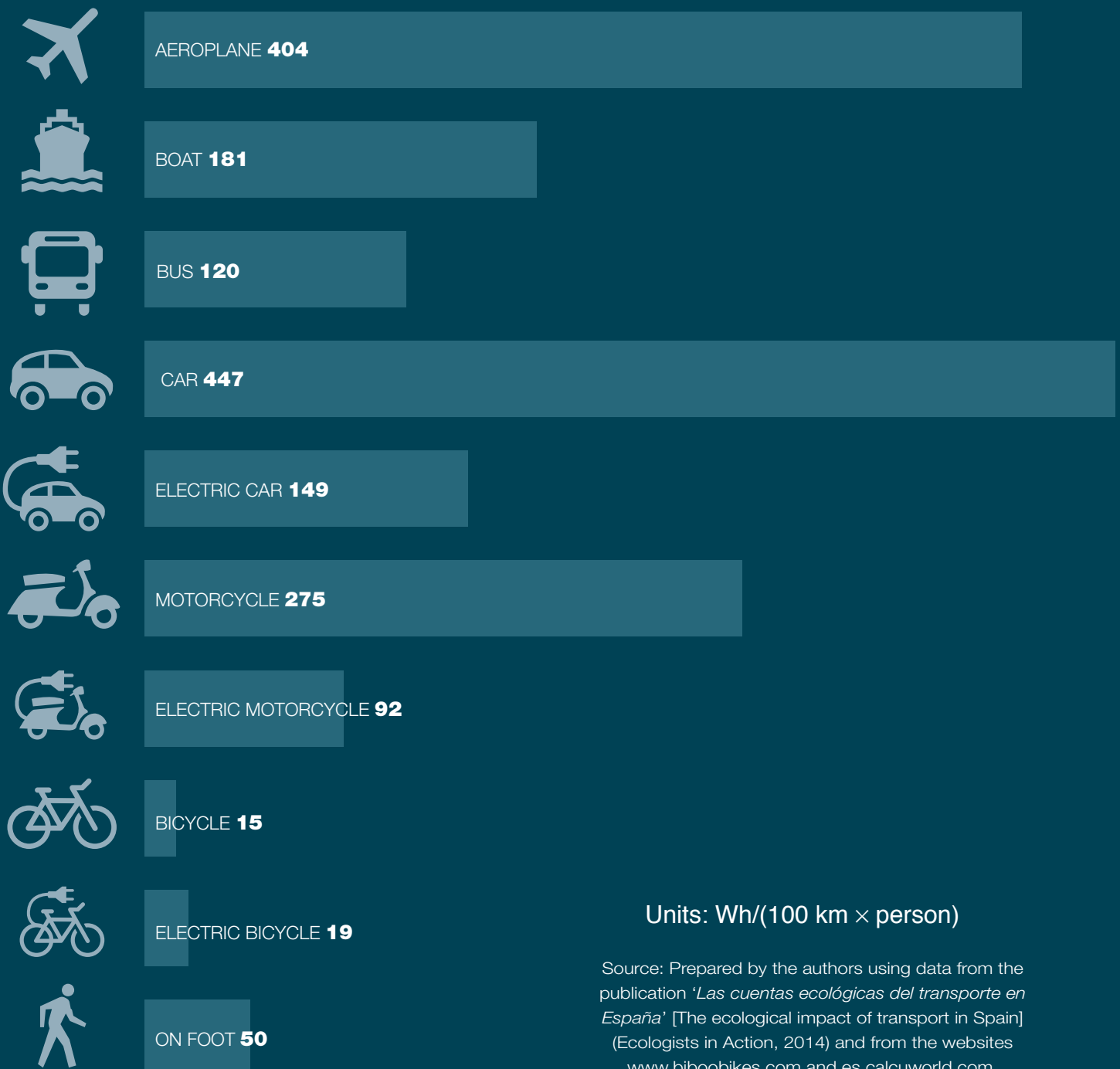


Comparison of energy consumption by different modes of transport

This infographic represents the energy required to move a person 100 kilometres by different modes of transport. In the case of travel by foot, bicycle or electric bicycle, the energy consumed comes entirely or partially from the person's own physical exertion, while all of the other modes of transport use an external energy source. Calculations are based on average occupancy.



Units: Wh/(100 km × person)

Source: Prepared by the authors using data from the publication '*Las cuentas ecológicas del transporte en España*' [The ecological impact of transport in Spain] (Ecologists in Action, 2014) and from the websites www.biboobikes.com and es.calcuworld.com.